

**RAB27B Antibody**  
**Purified Mouse Monoclonal Antibody (Mab)**  
**Catalog # AM8688b****Specification**

---

**RAB27B Antibody - Product Information**

Application	WB, FC,E
Primary Accession	<a href="#">O00194</a>
Reactivity	Human, Mouse
Host	Mouse
Clonality	monoclonal
Isotype	IgG1,k
Calculated MW	24608

**RAB27B Antibody - Additional Information****Gene ID** 5874**Other Names**

Ras-related protein Rab-27B, C25KG, RAB27B

**Target/Specificity**

This RAB27B antibody is generated from a mouse immunized with a recombinant protein of human RAB27B.

**Dilution**

WB~~1:2000

FC~~1:25

E~~Use at an assay dependent concentration.

**Format**

Purified monoclonal antibody supplied in PBS with 0.09% (W/V) sodium azide. This antibody is purified through a protein G column, followed by dialysis against PBS.

**Storage**

Maintain refrigerated at 2-8°C for up to 2 weeks. For long term storage store at -20°C in small aliquots to prevent freeze-thaw cycles.

**Precautions**

RAB27B Antibody is for research use only and not for use in diagnostic or therapeutic procedures.

**RAB27B Antibody - Protein Information****Name** RAB27B

**Function** Small GTPase which cycles between active GTP-bound and inactive GDP-bound states. In its active state, binds to a variety of effector proteins to regulate homeostasis of late endocytic pathway, including endosomal positioning, maturation and secretion (PubMed:[30771381](#)). Plays a

role in NTRK2/TRKB axonal anterograde transport by facilitating the association of NTRK2/TRKB with KLC1 (PubMed:[21775604](#)). May be involved in targeting uroplakins to urothelial apical membranes (By similarity).

**Cellular Location**

Membrane; Lipid-anchor. Late endosome

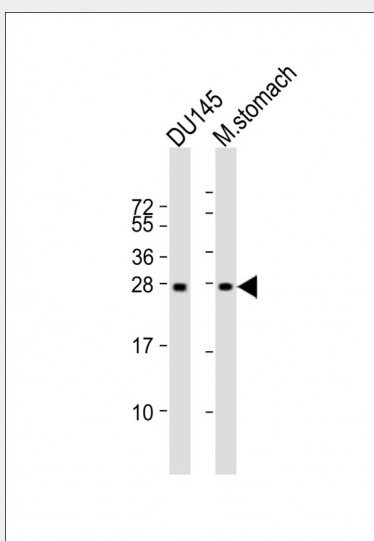
**Tissue Location**

Expressed primarily in testis.

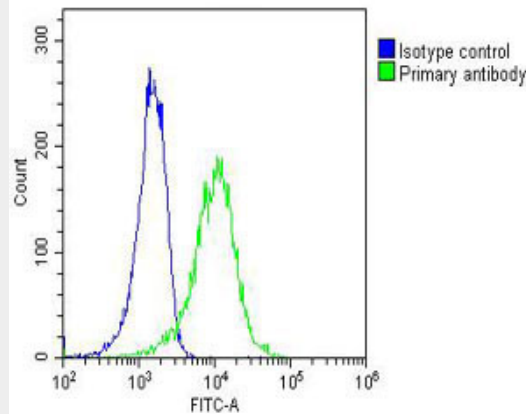
**RAB27B Antibody - Protocols**

Provided below are standard protocols that you may find useful for product applications.

- [Western Blot](#)
- [Blocking Peptides](#)
- [Dot Blot](#)
- [Immunohistochemistry](#)
- [Immunofluorescence](#)
- [Immunoprecipitation](#)
- [Flow Cytometry](#)
- [Cell Culture](#)

**RAB27B Antibody - Images**

All lanes : Anti-RAB27B Antibody at 1:2000 dilution Lane 1: DU145 whole cell lysate Lane 2: mouse stomach lysate Lysates/proteins at 20 µg per lane. Secondary Goat Anti-mouse IgG, (H+L), Peroxidase conjugated at 1/10000 dilution. Predicted band size : 25 kDa Blocking/Dilution buffer: 5% NFDM/TBST.



Overlay histogram showing A431 cells stained with AM8688b(green line). The cells were fixed with 2% paraformaldehyde (10 min) and then permeabilized with 90% methanol for 10 min. The cells were then incubated in 2% bovine serum albumin to block non-specific protein-protein interactions followed by the antibody (AM8688b, 1:25 dilution) for 60 min at 37°C. The secondary antibody used was Goat-Anti-Mouse IgG, DyLight® 488 Conjugated Highly Cross-Adsorbed(OJ192088) at 1/200 dilution for 40 min at 37°C. Isotype control antibody (blue line) was mouse IgG1 (1µg/1x10<sup>6</sup> cells) used under the same conditions. Acquisition of >10, 000 events was performed.

#### **RAB27B Antibody - Background**

May be involved in targeting uroplakins to urothelial apical membranes.

#### **RAB27B Antibody - References**

- Chen D.,et al.Biochem. Mol. Med. 60:27-37(1997).  
Chen D.,et al.Submitted (JUN-1999) to the EMBL/GenBank/DDBJ databases.  
Ramalho J.S.,et al.BMC Genet. 2:2-2(2001).  
Puhl H.L. III,et al.Submitted (APR-2002) to the EMBL/GenBank/DDBJ databases.  
Ota T.,et al.Nat. Genet. 36:40-45(2004).